

## Dispatcher Server for Mission Critical Control Rooms

CSP ecosystem is a telecommunication solutions designed to provide professional users with integrated network and services across heterogeneous technologies and to bring in professional broadband environment the same level of functionalities, services and reliability supplied by narrowband technologies.

The **Dispatcher Server (CSP-DS)** allows control room operators to participate in multimedia communications inside the CSP core networks. The CSP-DS is based on a client/server architecture implemented by PC class machines. Client systems feature an easy-to-use and modern graphical users interface.

The CSP-DS GUI is the SW component that provides the Human Machine Interface (HMI) control room operators supplying a complete set of communication features such as; voice and video communications, subscriber management facility, access to supplementary services and integration with localization services.

The CSP-DS comes with an integrated multifunctional audio device that hosts plugs towards audio accessories available for Dispatching operators as; external loudspeakers, PTT-switch pedal, headset, handset, analog recorder etc.

The services offered by CSP-DS to a dispatcher can be grouped in:

- › Main PTT services
- › Supplementary services
- › Location services.

## MAIN FEATURES

### TELEPHONIC SERVICES

- › Voice speech calls (individual calls, group calls)
- › Packet Data
- › Short Data Service (individual SDS, group SDS, free text messages)
- › Group real-time video streaming
- › Simultaneous group real-time video streaming service and voice communications service (planned on roadmap).

### SOME SUPPLEMENTARY PMR SERVICES

- › Priority, pre-emptive and emergency calls
- › Subscriber database services:
  - Group patching
  - Database browsing
  - Dynamic Group Number Assignment (DGNA)
- › Ambient listening
- › Discreet listening.

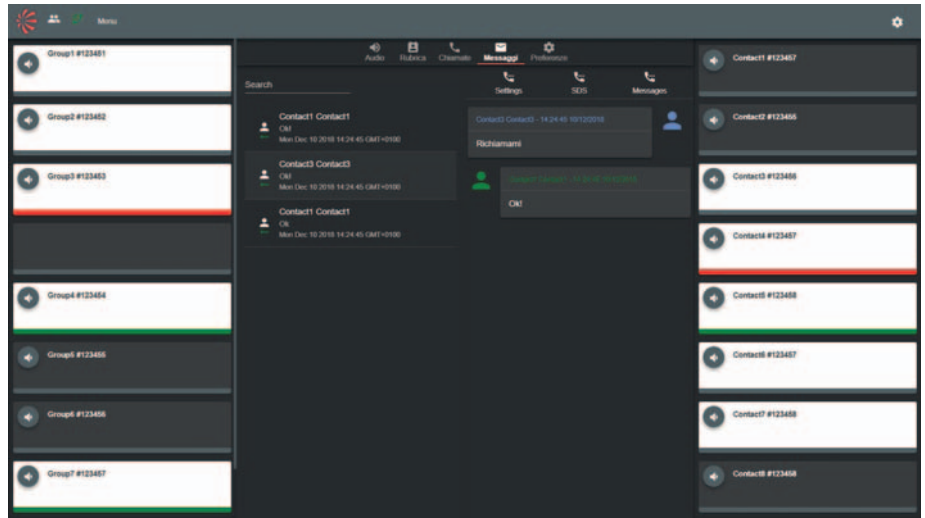
### LOCATION SERVICES

Managed resource are displayed on a map assisted by a cartographic engine hosted on server. Presence and tracking services, also controlled by server, ensure optimal operations management.

A typical dispatcher configuration is composed by a server controlling up to 10 clients that can be equipped with multiple monitors allowing operators to perform and manage:

- > mission critical communications services
- > localization and tracking
- > resource management.

Communications privacy (where required) is ensured by encryption management that is terminated on the client machine.



Typical dispatcher GUI

## TECHNICAL DATA

### PC SERVER SPECIFICATION

Chassis	Dual socket rack server
Dimensions (HxWxD)	86.6 (2U) x 483 mm (standard 19" rack) x 770 mm [3,41 x 19,02 x 30,31 in]
Weight	About 25 kg [55,12 lb] (variable, depending on the configuration)
Cooling system	By fans (6). Configuration 3x2 redundant/hot-plug
Power input	AC input (100-240 VAC, 50/60 Hz), 750W
Processor	Intel® Xeon® Bronze 3106 8C nHT 1.70 GHz (q.ty 2)
Memory	80 GB (5x16GB) 1Rx4 DDR4-2666 R ECC
Storage	<ul style="list-style-type: none"> <li>&gt; 2x HDD SAS, 12 Gb/s, 1.2 TB, 10,000 rpm, 512n, hot-plug, 3.5-inch, enterprise (in RAID1)</li> <li>&gt; 2x HDD SATA, 6 Gb/s, 4 TB, 7,200 rpm, 512n, hot-plug, 3.5-inch, business critical (in RAID1)</li> </ul>
RAID controller	PRAID EP420i (RAID level: 0, 1, 10, 5, 50, 6, 60, 2 GB)
Communication	<ul style="list-style-type: none"> <li>&gt; 2x Ethernet Ctrl. 4 x 1 Gbit/s (8 LAN ports)</li> <li>&gt; 2x on board 1Gbit LAN (configuration disable)</li> </ul>
Interfaces	4x USB 3.0 ports (2 front and 2 rear side)
Operating System	VmWare ESXi "bare metal"

### PC CLIENT SPECIFICATION

Operating System	Windows 10®
Processor	Intel® Xeon® W-2102 2.9GHz Turbo, 4C, 8.25M Cache, (120W) DDR4-2400
Memory	8GB (1x8GB) DDR4 2666MHz RDIMM ECC
Graphics	NVIDIA Quadro P400, 2GB, 3 mDP to DP adapter 5820T
Storage	2.5" 500GB 7200rpm SATA Hard Drive (SATA/SAS Hard Drive/Solid State Drive)
Storage controller	Integrated Intel AHCI SATA chipset controller (8x 6.0Gb/s), SW RAID 0, 1, 5, 10
I/O (input/output) ports	<ul style="list-style-type: none"> <li>&gt; Front: <ul style="list-style-type: none"> <li>- SD card slot</li> <li>- 2x USB 3.0 ports</li> <li>- USB 3.0 type-C port with PowerShare</li> <li>- USB 3.0 type-C port</li> <li>- Headset input</li> </ul> </li> <li>&gt; Rear: <ul style="list-style-type: none"> <li>- Microphone input</li> <li>- Mouse PS/2 input</li> <li>- USB 3.0 port</li> <li>- LAN connector</li> <li>- USB 3.0 port (Smart Power-On support)</li> </ul> </li> </ul>
Chassis dimensions (HxWxD)	417,9 mm x 176,5 mm x 518,3 mm [16,30"x 6,80"x 19,11" in]
Weight	15,4 kg (32 lb)
Storage drive	16X half height DVD-ROM
Power supply	100-240 VAC



This document contains information that is proprietary to Leonardo - Società per azioni and is supplied on the express condition that it may not be reproduced in whole or in part, or used for manufacture, or used for any purpose other than for which it is supplied.  
2019 ©Leonardo S.p.a.

For more information please email:  
securityandinformation@leonardocompany.com

Leonardo S.p.a.  
Via delle Officine Galileo, 1 - 50013 Campi Bisenzio (FI) - Italy  
Tel. +39 055 89501  
Fax +39 055 8950600

leonardocompany.com

MM08625 11-19

