



PRECISION APPROACH RADAR

PAR 2080 C is an X-band, modular, fixed ground controlled Precision Approach Radar designed for installation sites where existing fixed infrastructures can be exploited and transportability and installation times are not an issue.

PAR 2080 C provides efficient and accurate tracking of over 32 targets, with a field-of-view of 10° in elevation and an azimuth coverage of $\pm 10^\circ$. The radar delivers accurate detection and target discrimination in all weather conditions, with excellent clutter rejection.

PAR 2080 C radar operates with an azimuth resolution and accuracy exceeding ICAO requirements. With successful operation in over eight countries, PAR 2080 C has proven itself to be a reliable instrument with a MTBF in excess of 3000 hrs.

Extensive Built-In-Test capability allows for simple and easy maintenance.

KEY FEATURES

- Multiple landing control
- Fast runway changes
- Track-while-scan
- Fully coherent transmit/receive system
- Excellent clutter rejection
- Excellent accuracy and discrimination
- Normal weather and heavy rain modes
- Fully redundant RX/ TX/ PX/ data transmission
- High availability and reliability
- Easy maintenance and low support cost (unique BITE feature)
- Clutter mapping and synthetic representation.

GROWTH CAPABILITIES

- Long range mode
- Meteo map.

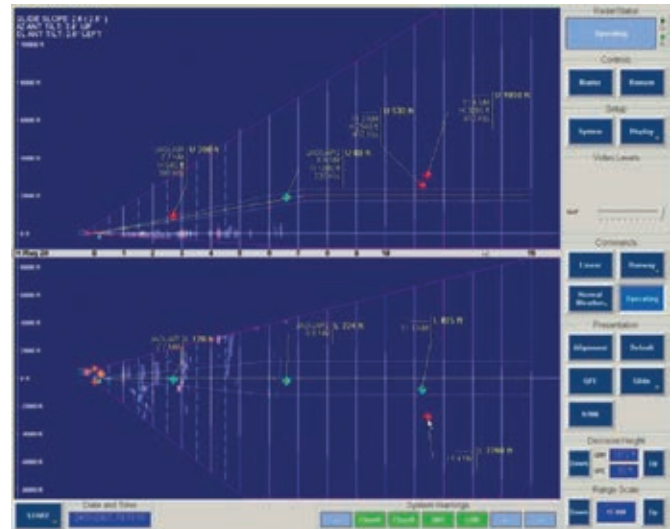
PAR 2080 C

TECHNICAL FEATURES

Operative Temperature Range	From -20°C to +45°C
Storage Temperature Range	From -32°C to +58°C
Relative Humidity	100% < 35°C and 65% >35°C
Power	400 VAC and 230 VAC - 3 Phases
Compliant to MIL STD 810E, methods 505.3, 506.3, 521.1, 509.3, 510.3	
EMI/EMC as per MIL STD 461E	
Data transmission link between Operators Room/Radar Head:	F.O., Telephone cable, Radio Link

RADAR PERFORMANCE

	ICAO requirements	PAR 2080 C
Azimuth resolution	1.2°	1.0°
Elevation resolution	0.6°	0.6°
Range resolution	< 120 m	< 100 m
Azimuth accuracy	< 6 mrad	< 6 mrad
Elevation accuracy	< 4 mrad	< 4 mrad
Range accuracy	Error < 3% of range	Error < 2% of range
Normal weather range scale	20 nmi	
Heavy rain range scale	10 nmi	
Long range scale	40 nmi (optional)	



Man Machine Interface

- High resolution TFT display
- Soft keys controls
- Touch screen capability
- Recording system
- Weather presentation
- Obstructions presentation
- Training mode
- System help online
- UPS.