



Land & Battlefield Systems

## LYRA® 10 FOR MOBILE CONFIGURATION

LYRA® 10 is a short-range ground surveillance radar providing advanced situational awareness for both security and defence applications. Thanks to its compact dimensions and low weight, the radar is suitable for integration on a wide range of military and civilian land platforms, including light multirole tactical vehicles (LMTVs) and commercial cross-country trucks.

Mobile platforms with LYRA 10 can operate autonomously or be integrated within a larger surveillance network. Typical applications for autonomous platforms include the protection of checkpoints and critical infrastructures, convoy escort, and support to special forces operations.

When interconnected with other sensors, mobile vehicles can operate as local gap-fillers or re-deployable observation nodes for border control, base protection, coastal and river surveillance and monitoring of large territories and critical areas (e.g. support to security for large events).

Vehicle integration is achieved through installation of an electro-mechanical kit. Crucially, load capacity is unchanged after the installation. In case of LMTVs, for example, the surveillance vehicle can still carry five people, with equipment stored in the rear cabin.

Radar activation can be carried out by a single operator inside the vehicle, maintaining a shielded position during all activation phases. Control of the system is via an easy to use user interface installed within the vehicle. This interface provides the operator with full radar control, intuitive situational awareness and audio/video alarms.

LYRA 10 can be provided with dedicated communications devices and state-of-the-art network enabled solutions to allow interoperability and integration with other devices (TV/IR cameras, C4I systems etc) and external systems.

LYRA 10 is part of the company's family of short and medium range surveillance radars, which incorporates the best of COTS hardware technology and proprietary state-of-the-art processing algorithms.

## CHARACTERISTICS

Main characteristics include:

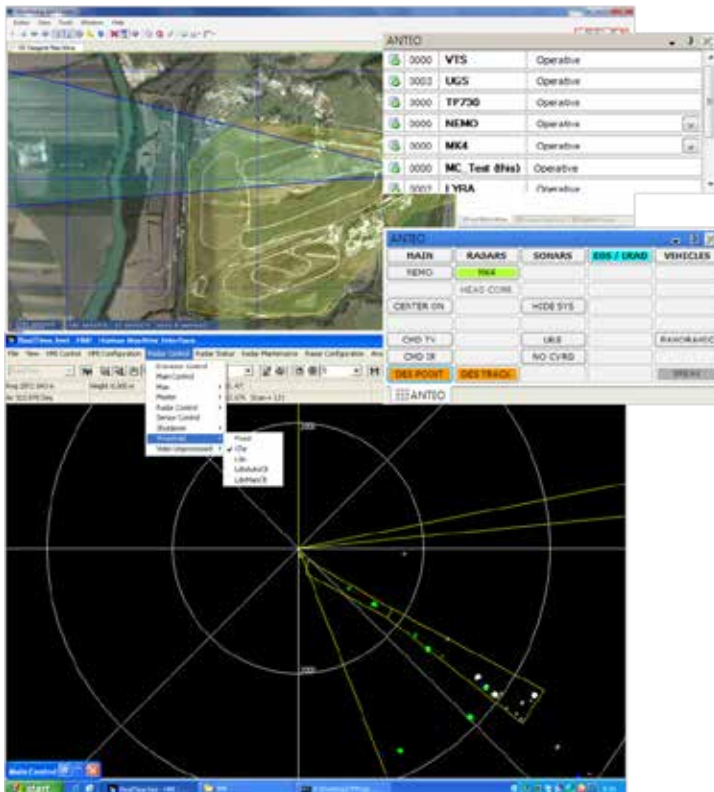
- X-band coherent pulse doppler radar technology
- Multiple frequencies of operation with user-selectable operational modes
- Solid-state technology for high reliability, low maintenance and low life-cycle costs
- Automatic detection, tracking and classification of different sized targets including people, vehicles, boats, and low-altitude flying targets such as helicopters, unmanned aerial vehicles (UAVs), and slow moving aircraft
- Outstanding performance in range and azimuth measurements, up to 360° situational awareness
- Instrumented range of 24km
- Remote data transmission and control
- Very low false alarm rate for effective application in border and territory control and robust sea clutter cancellation provision, based on two patented technologies, for boats and rotary wing targets
- Low Probability-of-Interception (LPI)

Typical (field-proven) detection ranges are as follows:

- Person >10km
- Small vehicles and vessels >15km
- Helicopters and UAVs >20km
- Large vehicles and vessels up to 24km

## Alternative installations

LYRA 10 is also available for fixed installations on towers, for deployable trailer-based configurations or as a man-portable radar system.



For more information please email [infomarketing@selex-es.com](mailto:infomarketing@selex-es.com)

Selex ES S.p.A. - A Finmeccanica Company

Via Tiburtina, Km 12.400 - 00131 Rome - Italy - Tel: +39 06 41501 - Fax: +39 06 413133

This publication is issued to provide outline information only and is supplied without liability for errors or omissions. No part of it may be reproduced or used unless authorised in writing.

We reserve the right to modify or revise all or part of this document without notice.

2015 © Copyright Selex ES S.p.A.

[www.selex-es.com](http://www.selex-es.com)

LND MM08050 2-15